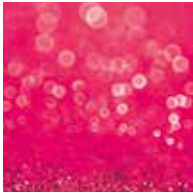


LOWE SOLUTIONS

FAUNA MARIN RED X

Special liquid tonic for algae control





FAUNA MARIN RED X

RED X

RED X is a special liquid tonic that targets unwanted algae and bacteria in saltwater aquariums.

RED X works solely through the aquariums biological process and DOES NOT contain any prescription drugs or antibiotics. Instead, it works by inhibiting the metabolic cycle of unwanted algae and bacteria which then stops the growth of algae without disrupting beneficial bacteria.

Why use RED X?

Red X is the perfect solution for preventing algae growth in the aquarium. While other solutions may impact the bacterial stability of the aquarium, RED X successfully completes its task in a purely biological and organic way. RED X is suitable for eliminating light cases of cyanobacteria, dinoflagellates and gold algae coverings.

Is RED X reef safe?

Absolutely! RED X is a very gentle on the reef and therefore does not affect fish, coral, or livestock when used at the intended dosage.



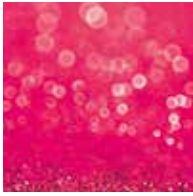
FAUNA MARIN RED X

RED X

RED X counteracts:

- Green and red cyanobacteria
- Mild dinoflagellate outbreaks (Ostreopsis sp., Amphidinium sp., Prorocentrum sp., Coolia sp., Symbiodinium and others)
- Gold and armor algae growth
- Diatoms





FAUNA MARIN RED X

Should I use Red X or Dino X?

Depending on the severity of algae outbreak, mild to moderate cases should first be treated with RED X, then later continued with DINO X. This back-to-back combination will have a much stronger effect than treating with solely one product. Heavily infested aquariums with dinoflagellates should be treated with Dino X immediately.

ATTENTION: New aquariums

Aquariums that are still in the "cycling" phase should not use RED X. Algae growth during the start-up phase is normal and should not be disrupted. This phase is part of the healthy development of a marine aquarium.

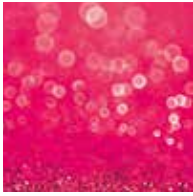
RED X: Not for correcting water or nutrient values

RED X is not suitable for altering water and nutrient values.

If you wish to gather more information on your water and nutrient values, we recommend getting an ICP analysis of your aquarium water. The provided information will then direct you towards the changes that need to be made in your aquarium.

The outbreak of cyanobacteria is strongly related to certain ratios of trace and nutrient values. When there is an imbalance, cyano typically appears. Such imbalances can be permanently eliminated by adjusting the values of your aquarium water.





FAUNA MARIN RED X

Dosage

10 ml / 100 liters (26 US gal.) daily for 6 days – After day 6, stop dosage and wait an additional 5 days with no dosages; total treatment is for 11 days.

During treatment, do not do water changes, do not use carbon, adsorbers, ozone or UV. Clean all existing filter sponges if possible.

After 11 days, you can resume normal aquarium care.

Multiple RED X treatments: When is it okay?

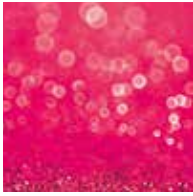
In particularly stubborn cases of algae outbreaks, if algae is not eliminated, please wait 1 week before running a 2nd RED X treatment.

ReBiotic: Restoring bacterial balance to the aquarium

After RED X treatment, we recommend adding Fauna Marin REBIOTIC to restore a healthy and powerful biological process in the aquarium. Adding REBIOTIC will effectively prevent your aquarium from reintroducing unwanted deposits that later lead to more problems. In particularly stubborn cases, if algae is not eliminated, you can wait 1 week before running a 2nd RED X treatment. After 2nd treatment, you can begin using REBIOTIC.

RED X has been tested on hundreds of aquariums. In more than 99% of cases, a one treatment was successful.





FAUNA MARIN RED X

Steps to follow for treating a problem in the aquarium

1. Diagnose of possible causes of the problem
2. Send water sample to an ICP lab for analysis of all relevant water values
3. Receive interpretation of test results from a specialist.
Review data and make adjustments to water values
4. Check and adjustments of the aquarium's technique
5. If attempt is unsuccessful, begin treatment with appropriate preparations

Overview of products to use

Mild to moderate outbreaks:



RED X → REBIOTIC

Heavy infestation or heavy dinoflagellates:

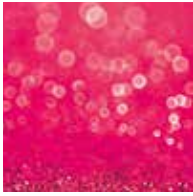


DINO X → REBIOTIC → BACTO ENERGY

Post-infestation after treatments:



RED X



FAUNA MARIN RED X

For further information or individual advice, please contact us directly on our Support forum:
<https://forum.faunamarin.de>

For more information on corals and our products, please visit our website:
www.faunamarin.de

Manuals and HTU guides can be found in our Download Center:
www.faunamarin.de/support-downloads/



HOW TO USE

Wishing you much success!

Fauna Marin GmbH